

CRU-2 Series Pump Impeller Shaft Service Parts Lists

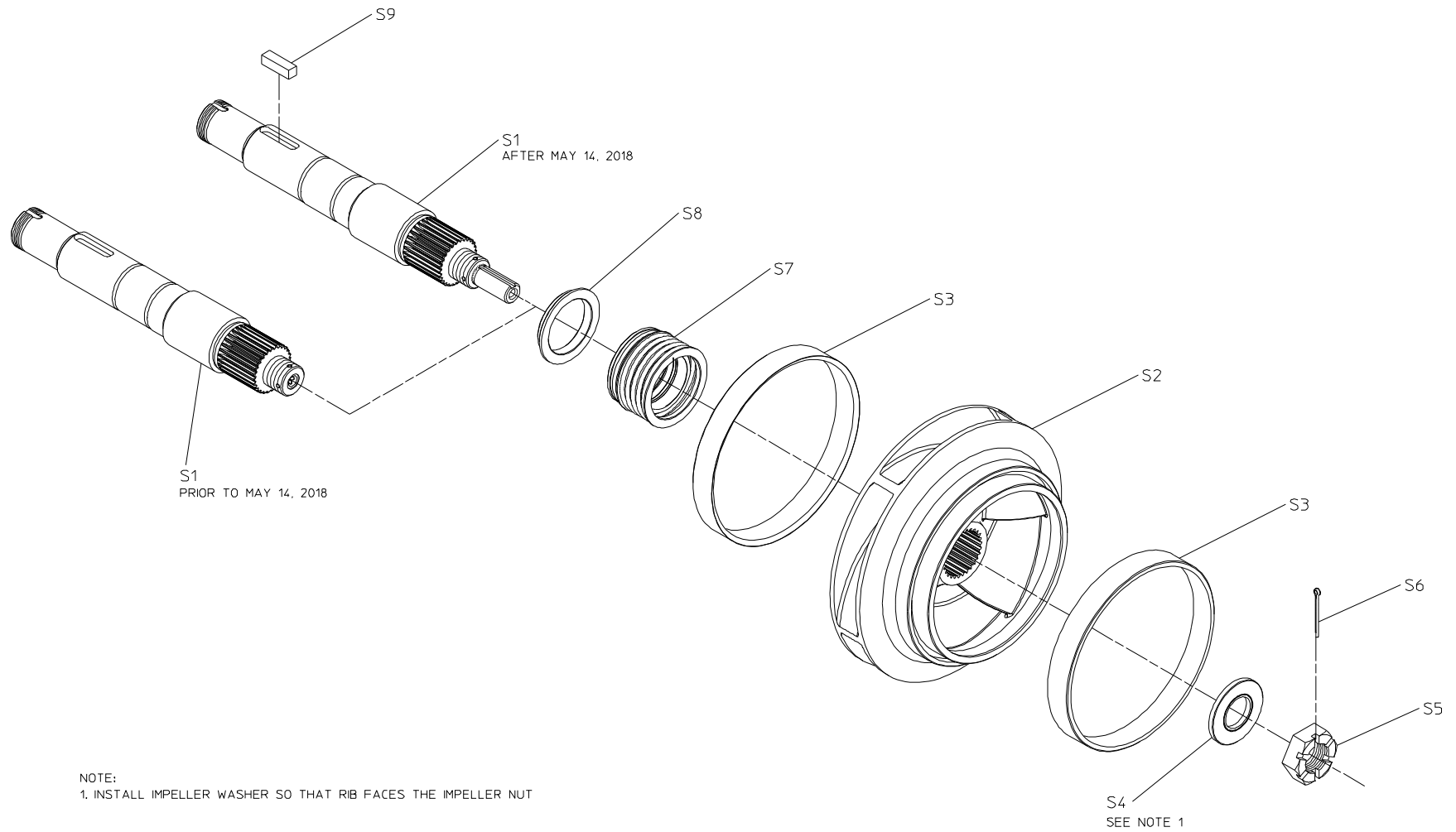
Index:

| Pump Model | View | See Page |
|---------------------------------|--------------------|-----------------|
| CRUC21-2 CRUQC-2 | Exploded View | 2, 3 |
| | Cross Section View | 4, 5 |
| CRU-2 Direct Drive | Exploded View | 6, 7 |
| | Cross Section View | 8, 9 |
| All – Optional Impeller Inducer | Exploded View | 10, 11 |

CRUC21-2 / CRUQC-2 Exploded View

| REF NO. | DESCRIPTION |
|---------|--|
| S1 | Impeller Shaft (Includes oil seal sleeve from transmission assembly) |
| S2 | Impeller |
| S3 | Wear Ring (Available in Standard or .025, .050 and .075 Undersize) |

| REF NO. | DESCRIPTION |
|---------|---------------------|
| S4 | Impeller Washer |
| S5 | Impeller Nut |
| S6 | Cotter Pin |
| S7 | Mechanical Seal Kit |
| S8 | Throttle Bushing |
| S9 | Key |

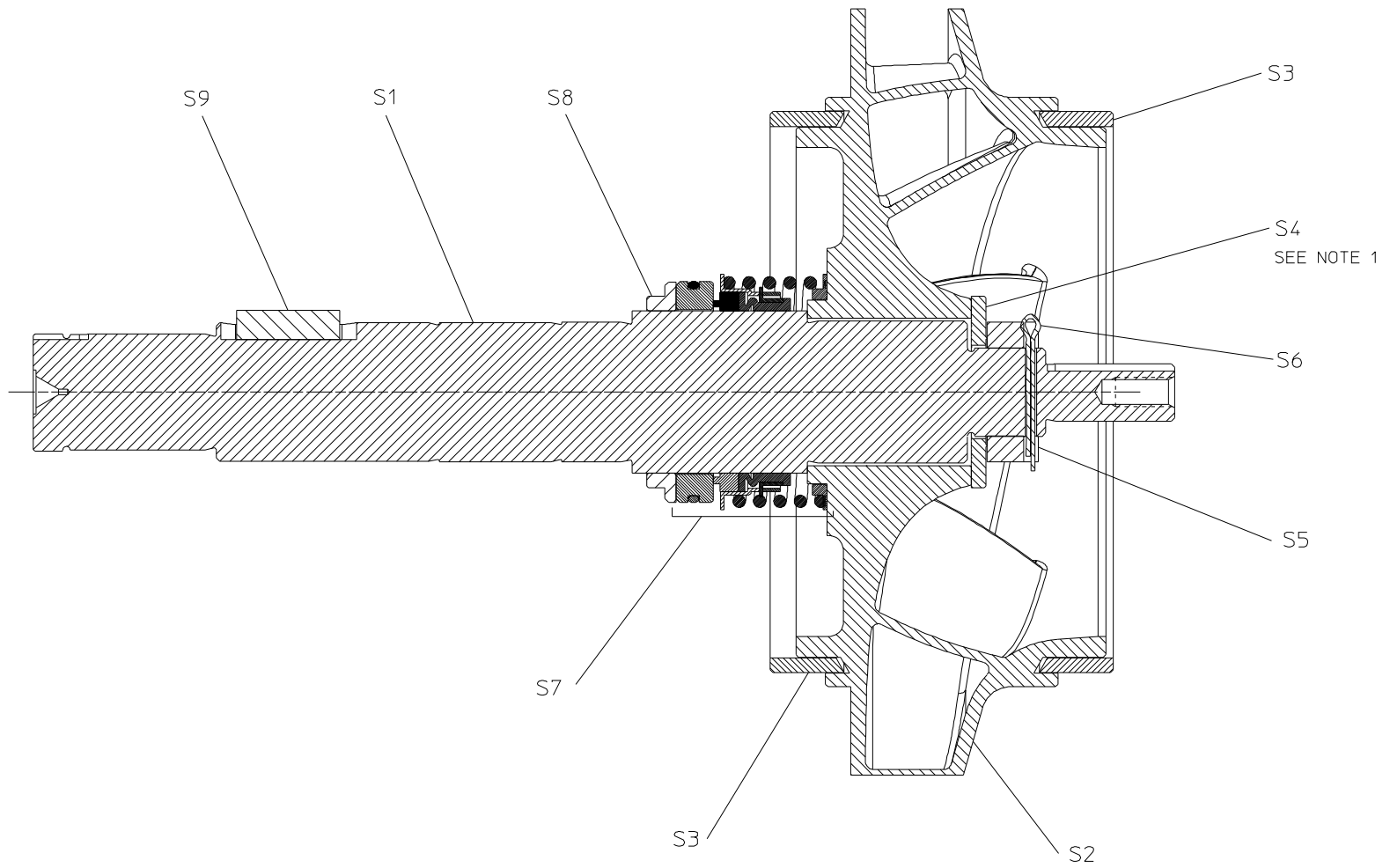


CRUC2-2 & CRUC21-2 IMPELLER SHAFT ASSEMBLY

CRUC21-2 / CRUQC-2 Cross Section View

| REF NO. | DESCRIPTION |
|---------|--|
| S1 | Impeller Shaft (Includes oil seal sleeve from transmission assembly) |
| S2 | Impeller |
| S3 | Wear Ring (Available in Standard or .025, .050 and .075 Undersize) |

| REF NO. | DESCRIPTION |
|---------|---------------------|
| S4 | Impeller Washer |
| S5 | Impeller Nut |
| S6 | Cotter Pin |
| S7 | Mechanical Seal Kit |
| S8 | Throttle Bushing |
| S9 | Key |



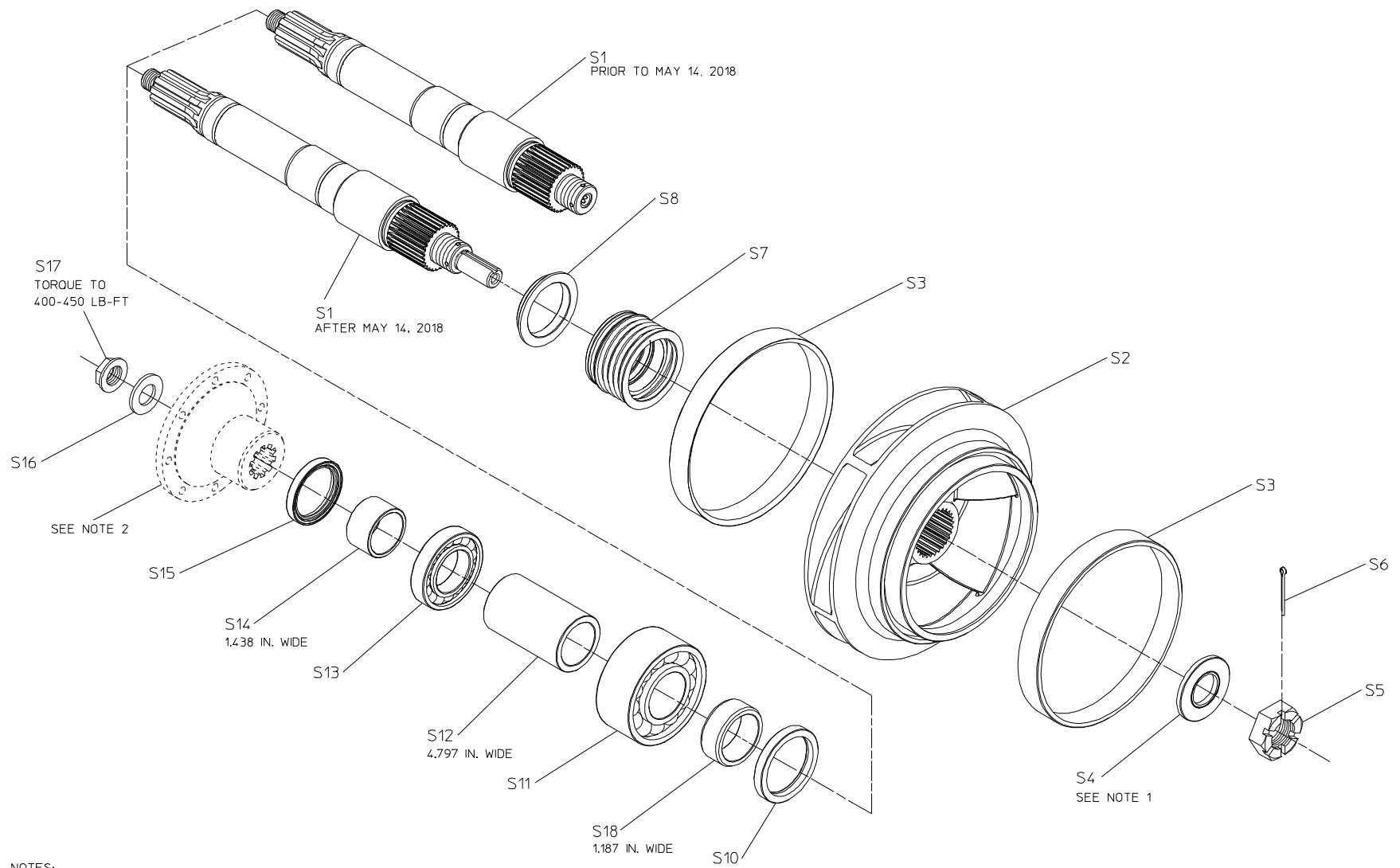
NOTE:
 1. INSTALL IMPELLER WASHER SO THAT RIB FACES THE IMPELLER NUT

CRUQC-2 & CRUC21-2 IMPELLER SHAFT ASSEMBLY

CRU-2 Direct Drive Exploded View

| REF NO. | DESCRIPTION |
|---------|--|
| S1 | Impeller Shaft (Includes oil seal sleeve S18) |
| S2 | Impeller |
| S3 | Wear Ring (Available in Standard or .025, .050 and .075 Undersize) |
| S4 | Impeller Washer |
| S5 | Impeller Nut |
| S6 | Cotter Pin |
| S7 | Mechanical Seal Kit |

| REF NO. | DESCRIPTION |
|---------|---------------------------------|
| S8 | Throttle Bushing |
| S10 | Oil Seal |
| S11 | Ball Bearing, Double Row |
| S12 | Spacer, 4.797 in. wide |
| S13 | Ball Bearing, Single Row |
| S14 | Oil Seal Sleeve, 1.438 in. wide |
| S15 | Oil Seal |
| S16 | Washer, 1 in. |
| S17 | Self-locking Nut, 1 in. |
| S18 | Oil Seal Sleeve, 1.187 in. wide |



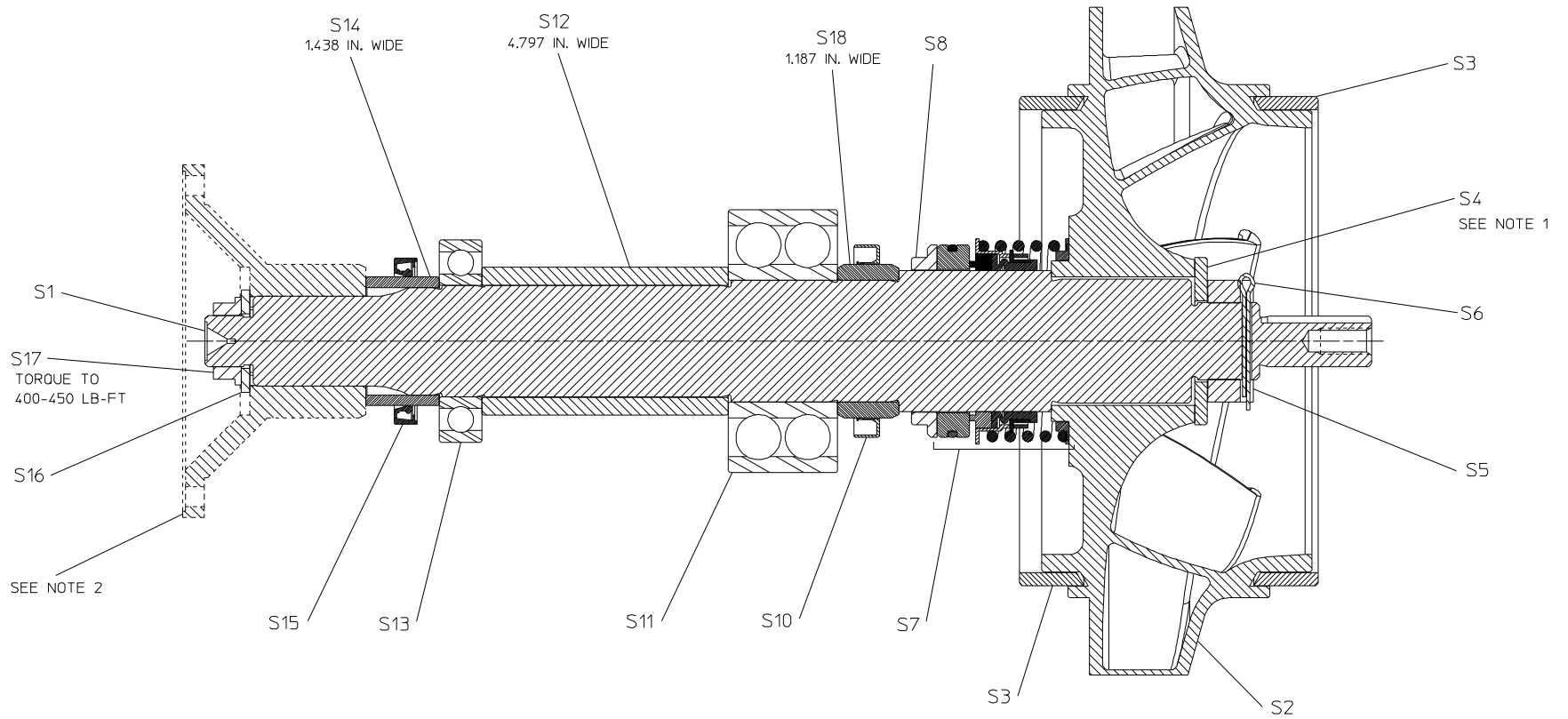
- NOTES:
1. INSTALL IMPELLER WASHER SO THAT THE RIB FACES THE IMPELLER NUT.
 2. COMPANION FLANGE OR END YOKE MAY NOT HAVE BEEN SUPPLIED BY WATEROUS.

CRU-2 DIRECT DRIVE IMPELLER SHAFT ASSEMBLY

CRU-2 Direct Drive Cross Section View

| REF NO. | DESCRIPTION |
|---------|--|
| S1 | Impeller Shaft (Includes oil seal sleeve S18) |
| S2 | Impeller |
| S3 | Wear Ring (Available in Standard or .025, .050 and .075 Undersize) |
| S4 | Impeller Washer |
| S5 | Impeller Nut |
| S6 | Cotter Pin |
| S7 | Mechanical Seal Kit |

| REF NO. | DESCRIPTION |
|---------|---------------------------------|
| S8 | Throttle Bushing |
| S10 | Oil Seal |
| S11 | Ball Bearing, Double Row |
| S12 | Spacer, 4.797 in. wide |
| S13 | Ball Bearing, Single Row |
| S14 | Oil Seal Sleeve, 1.438 in. wide |
| S15 | Oil Seal |
| S16 | Washer, 1 in. |
| S17 | Self-locking Nut, 1 in. |
| S18 | Oil Seal Sleeve, 1.187 in. wide |



NOTES:

1. INSTALL IMPELLER WASHER SO THAT THE RIB FACES THE IMPELLER NUT.
2. COMPANION FLANGE OR END YOKE MAY NOT HAVE BEEN SUPPLIED BY WATEROUS.

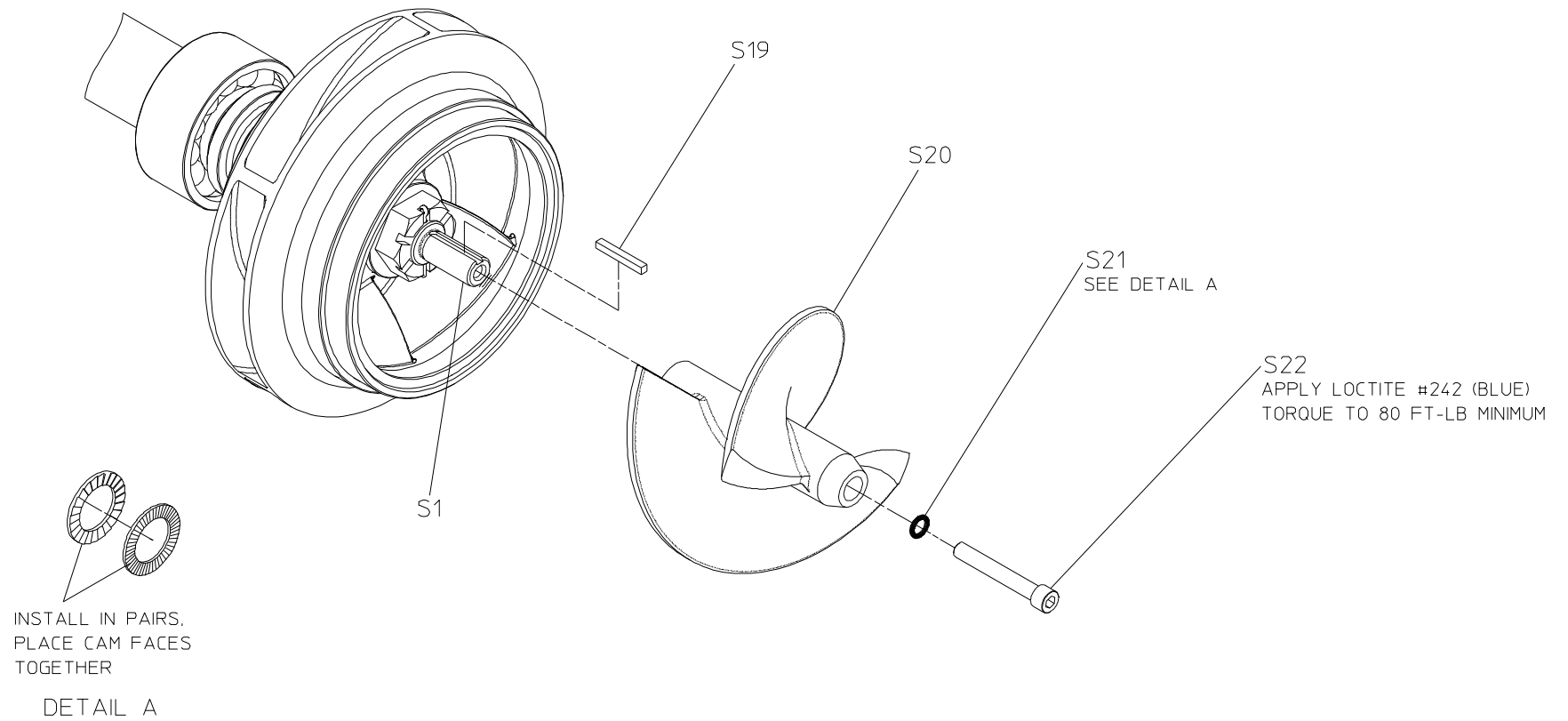
CRU-2 DIRECT DRIVE IMPELLER SHAFT ASSEMBLY

CRU-2 Direct Drive Cross Section View

Impeller Inducer Exploded View

| REF NO. | DESCRIPTION |
|---------|-----------------------------------|
| S1 | Impeller Shaft |
| S19 | Square Key, 1/4 x 2 |
| S20 | Inducer |
| S21 | Nord Lock Washer, 1/2 |
| S22 | Socket Head Screw, 1/2-14 x 2-1/2 |
| | |
| | |
| | |

| REF NO. | DESCRIPTION |
|---------|-------------|
| | |
| | |
| | |
| | |
| | |
| | |
| | |
| | |
| | |



IMPELLER INDUCER